



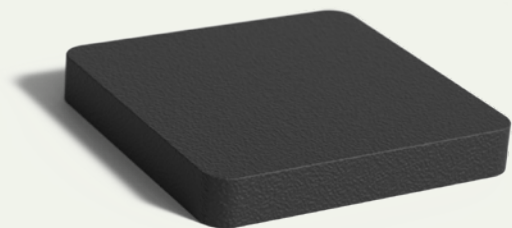
ADEZZ

DESIGN TO GROW

Planters fibreglass



Material fibreglass



Our fibreglass planter is made of high-quality reinforced fibreglass. This makes the planter sturdy. The reinforcement has been extended into the corners, which prevents splitting. The fibreglass is dyed through, and the planter will retain its colour.

SPECIFICATIONS

- 5-year guarantee.
- Fibreglass planters are frost-resistant and strengthened to prevent warping.
- Lightweight and very strong.
- Finished with a double-turned edge.
- The fibreglass has a thickness of 3 mm.
- Includes a channel for drainage and circles for drilling drainage holes.
- We also supply professional maintenance products.

KEY POINTS TO NOTE

- Products should be unpacked immediately upon receipt to release any moisture trapped inside the packaging. This moisture can cause stains that are difficult to remove.
- Always drill drainage holes in the base of the planter. The base has circles for drilling. These circles are connected by a drainage channel. After drilling the drainage holes, install the overflow pipe. This will ensure that no excess water remains in the planter.
- Fibreglass planters should always be installed on a flat surface. Do not place the planter on beams, stones, etc.
- The planter is not suitable for moving once filled.
- Clean at least twice a year with our ADEZZ cleaner/protector. Do not use a pressure washer and/or scouring pad. This damages the coating.
- The guarantee expires if you drill or grind in a way that is not specified.

RAL COLOURS

Standard RAL colours are RAL 7016, RAL 7021, RAL 9005 and RAL 9016. For all other available RAL colours, please check our website. There is a start-up charge for these colours.

Note! Colours may vary from the image.



RAL 7016

RAL 7021

RAL 9005

RAL 9016

Installation

1. Provide a flat, solid surface. If not done carefully, it can create tension in the product which can result in damage to the product.

Note! Always drill drainage holes in the bottom of the planter, use (if present) the raised parts of the bottom of the planter.

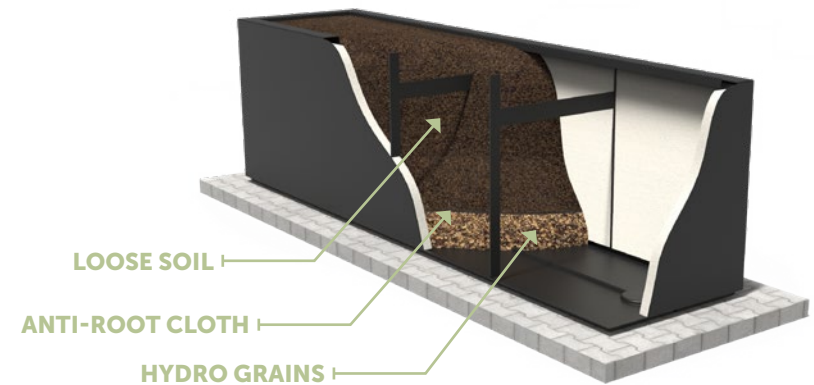
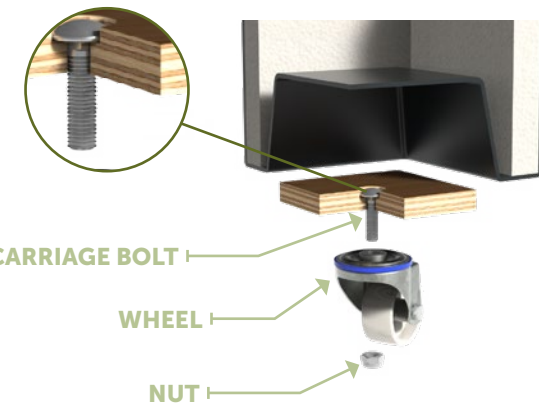
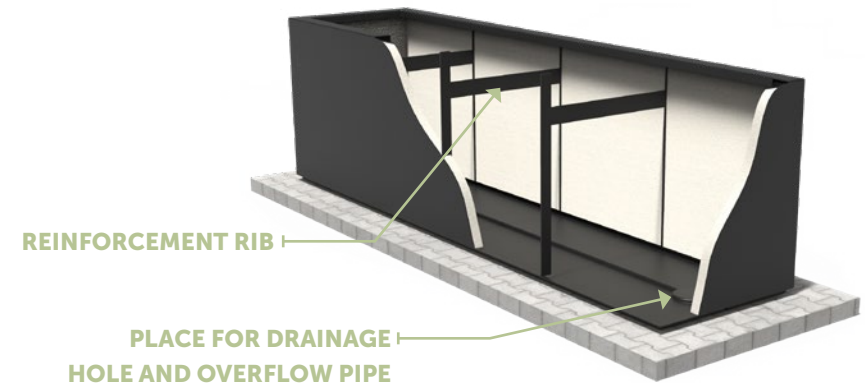
2. If desired, place overflow pipes in the designated place in the bottom of the planter to create a water reservoir. The number of overflow pipes to be used depends on the number of drainage holes, view the drawings on our website for the correct number.
3. Reinforcement ribs in planters are essential for the construction and dimensional stability of the planter. These must never be removed!
4. Always provide sufficient breathing space (minimum 1 cm) around the planters to prevent moisture trapping.

Install wheels

1. Wheels are supplied separately with the planter. Assembly is very easy, see images on the right.
2. Position the wooden board with the four large holes upwards and press the carriage bolts firmly all the way in (see detailed picture).
3. Then slide the wheel over the bolt and tighten it with the supplied nut.
4. Then place the wooden board with wheels under the planter, they do not need to be connected to each other.

Planting advice

1. Insert the overflow pipes into the drainage holes prepared for them.
2. Cover the bottom of the planter with about 10 cm of hydro pellets.
3. Place a permeable anti-root membrane over the drainage material.
4. Cover the membrane with soil suitable for your chosen plants.
5. Keep the drainage holes clear so that excess water can run off.



Models

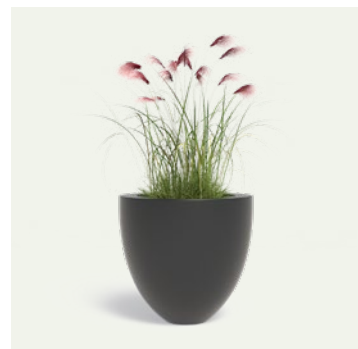
For a complete overview of all our products and specifications, please visit www.adezz.com



ACER



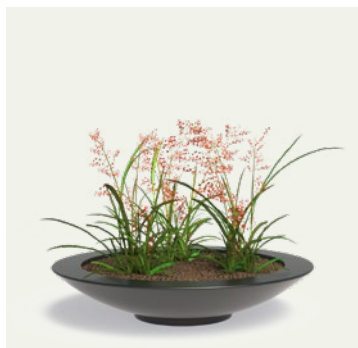
BELLIS



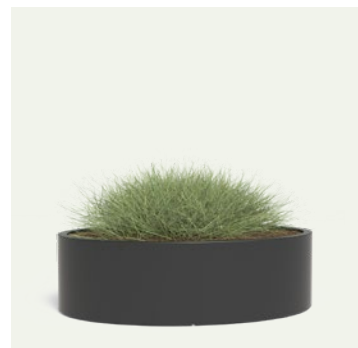
CANNA



CARREZ



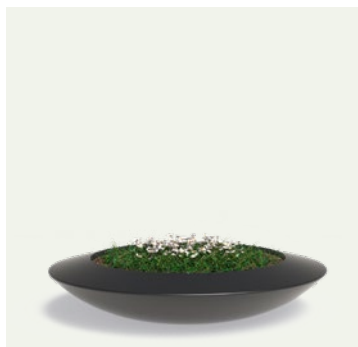
CEDER



ELLIPSE

Models

For a complete overview of all our products and specifications, please visit www.adezz.com



MALVA



ORGAN



SHAPE

Accessories

All our accessories meet the highest standards and are an highly suitable addition to our products. Visit www.adezz.com for a complete overview of our accessories.



CLEANER & PROTECTOR

We recommend cleaning our products at least twice a year. For optimal results, use the ADEZZ BIO Cleaner & Protector. Always read the descriptions on the packaging carefully before use.



WHEELS

Wheels are an option on many of our products. Check www.adezz.com for the options per product (Total load capacity 450kg).



OVERFLOW PIPE

Overflow pipes provide a water buffer at the bottom of the planter and fit into the standard drainage holes, making them easy to install.

ADEZZ

DESIGN TO GROW

Spending time outdoors has soared in popularity over the last few years, becoming an increasingly important part of our daily lives. Our brands ADEZZ, FORNO and FURNS offer a diverse range of products guaranteed to enhance the outdoor experience. Our collections create an ambience in which you can enjoy your garden to the fullest.

All brands have their own character, but they are designed to work together, allowing you to create endless combinations. The materials, finishes and styles are repeated across the collections so that they coordinate beautifully. The result? A long-lasting, stylish garden design: from sleek edging to exclusive furniture and from sturdy fireplaces to elegant water tables.

We design and manufacture all our products in-house, ensuring that we can continue to provide the high quality that you have come to expect from us. And we do this at the most competitive price possible. All our products are made in Europe with the utmost care, so we can be sure that they meet our exacting standards.

