



ADEZZ

DESIGN TO GROW

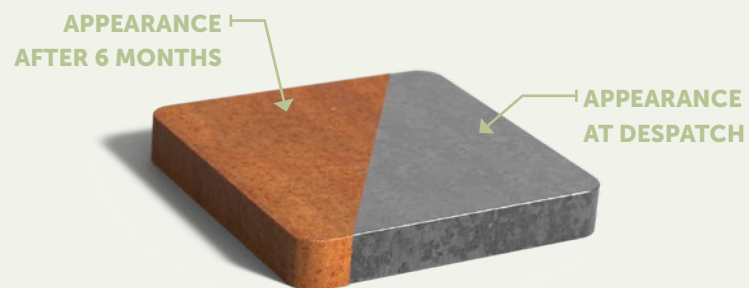
CARREZ Connect

CARREZ Connect

This planter with square corners looks great in gardens with clean lines. The sleek, double-turned edge gives it a sturdy appearance. The CARREZ is also ideal for use as a divider in hospitality venues.



Material corten steel



The CARREZ corten steel planter will add warmth and boldness to any garden, thanks to the orange-brown patina on the metal. This patina is formed by a natural layer of rust. Another name for corten iron is weathering steel: weather conditions have a positive effect on this planter.

Corten steel is a metal alloy made by adding copper, phosphorus, silicon, nickel and chromium to steel. When exposed to air, the material forms a protective layer of rust. This natural coating prevents further corrosion, extending the planter's life.

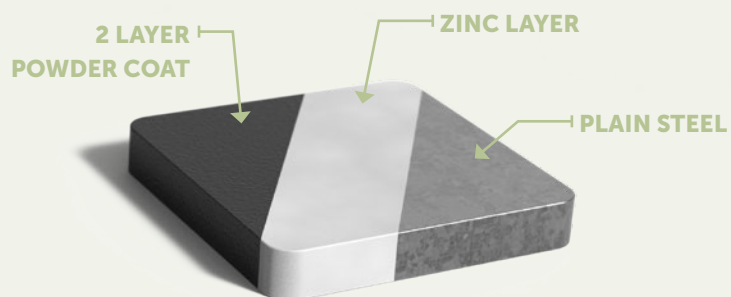
SPECIFICATIONS

- 5-year guarantee.
- Corten steel planters are very robust, hard-wearing, weatherproof, low-maintenance and durable.
- The corten steel has a standard thickness of 2 mm.
- This product is delivered ready for self-assembly, making it ideal for placement around an established tree or plant.
- Includes bolts, nuts and assembly instructions.
- Products are delivered without rust. The corten steel rusting process takes about 4-5 months, depending on weather conditions.
- The rust can be fixed by applying Owatrol. This is a penetrating rust inhibitor that forms a protective anti-rust coating. Owatrol protects the planter and stops the rust on corten steel flaking off.

KEY POINTS TO NOTE

- Products should be unpacked immediately upon receipt to release any moisture trapped inside the packaging. If the product is left in its packaging, it may develop uneven rust patches.
- Ensure proper drainage.
- Do not use hydro pellets: they retain moisture.
- We do not recommend using corten steel within 2 km of a coastline.
- The weathering process may cause rust run-off.
- The guarantee expires if you drill or grind in a way that is not specified.

Material galvanised steel coated



The CARREZ galvanised steel planter gives gardens a timeless look. The hot-dip galvanised material ensures that the planter is corrosion-resistant and will last outdoors for decades. The planter is also very strong and impact resistant.

Hot-dip galvanising involves immersing the metal in a bath of molten zinc. This prevents the planter from rusting and creates a protective layer over the metal. This ensures that the CARREZ galvanised steel planter can be enjoyed for many years. Finally, the planter is also coated in the desired colour.

SPECIFICATIES

- 5-year guarantee.
- Galvanised steel planters are very strong, impact resistant, weatherproof and durable.
- The standard thickness of the steel is 2 mm.
- This product is delivered ready for self-assembly, making it ideal for placement around an established tree or plant.
- Includes bolts, nuts and assembly instructions.

KEY POINTS TO NOTE

- Products should be unpacked immediately upon receipt to release any moisture trapped inside the packaging. If the product is left in its packaging, it may develop uneven rust patches.
- Ensure proper drainage.
- The guarantee expires if you drill or grind in a way that is not specified.

RAL COLOURS

Standard RAL colours are RAL 7016, RAL 7021, RAL 9005 and RAL 9016.

For all other available RAL colours, please check our website. There is a start-up charge for these colours.

Note! Colours may vary from the image.



RAL 7016

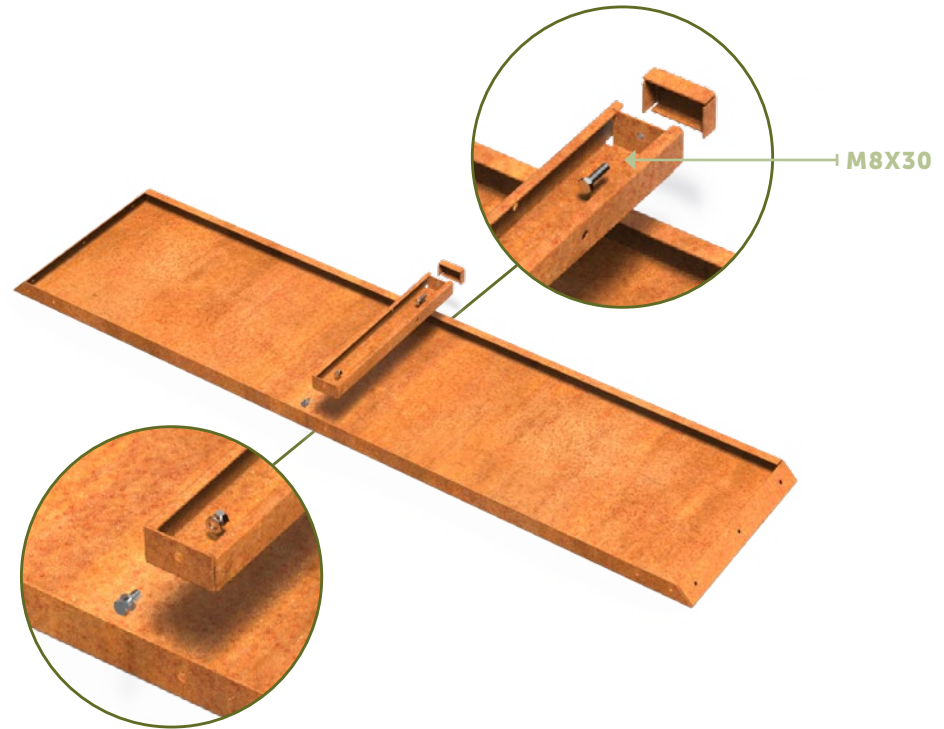
RAL 7021

RAL 9005

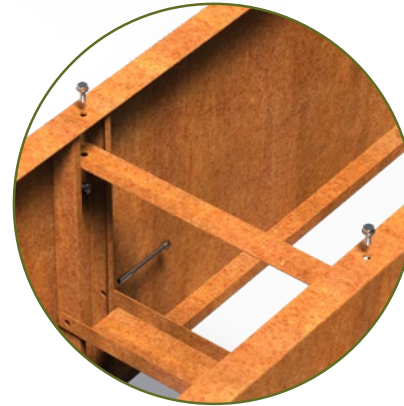
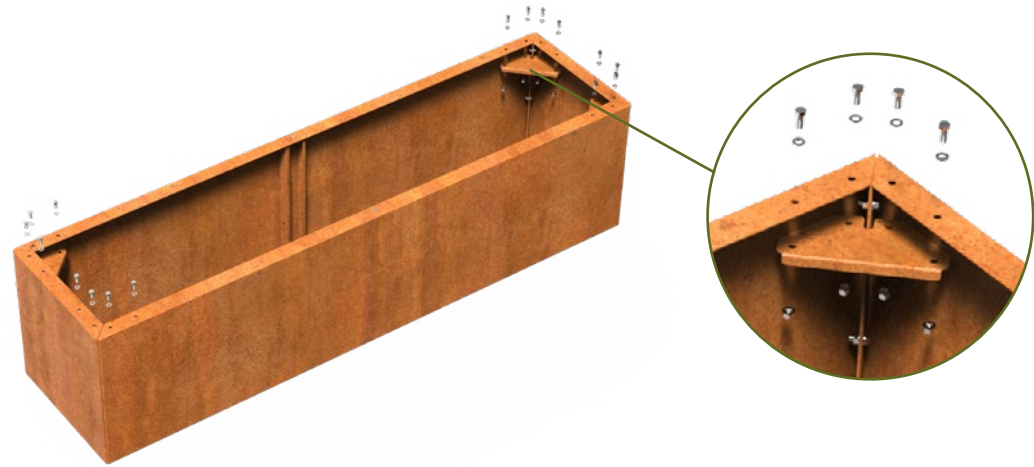
RAL 9016

Installation

1. Provide a flat, solid surface. If not done carefully, it can create tension in the product which can result in damage to the product.
2. Tension rods and U-profiles in planters are essential for construction and dimensional stability. Therefore, always install them if they are included!
3. When fitting the U-profiles, ensure that the top of the cover lies with the **short edge towards the back wall**.
4. Use a M8x30 bolt to attach the U-profile at the top, at the bottom use a M8x20 bolt in combination with 2 washers and a M8 nut. Place the bolts with the **bolt head outwards**, so that the container will eventually stand on the bolt heads.
5. Connect the 4 walls with each other while standing on the top edge on the ground, so that the planter only has to be turned once
6. Use M8x20 bolts and tighten them by hand. Tighten them after placing the angle plates.

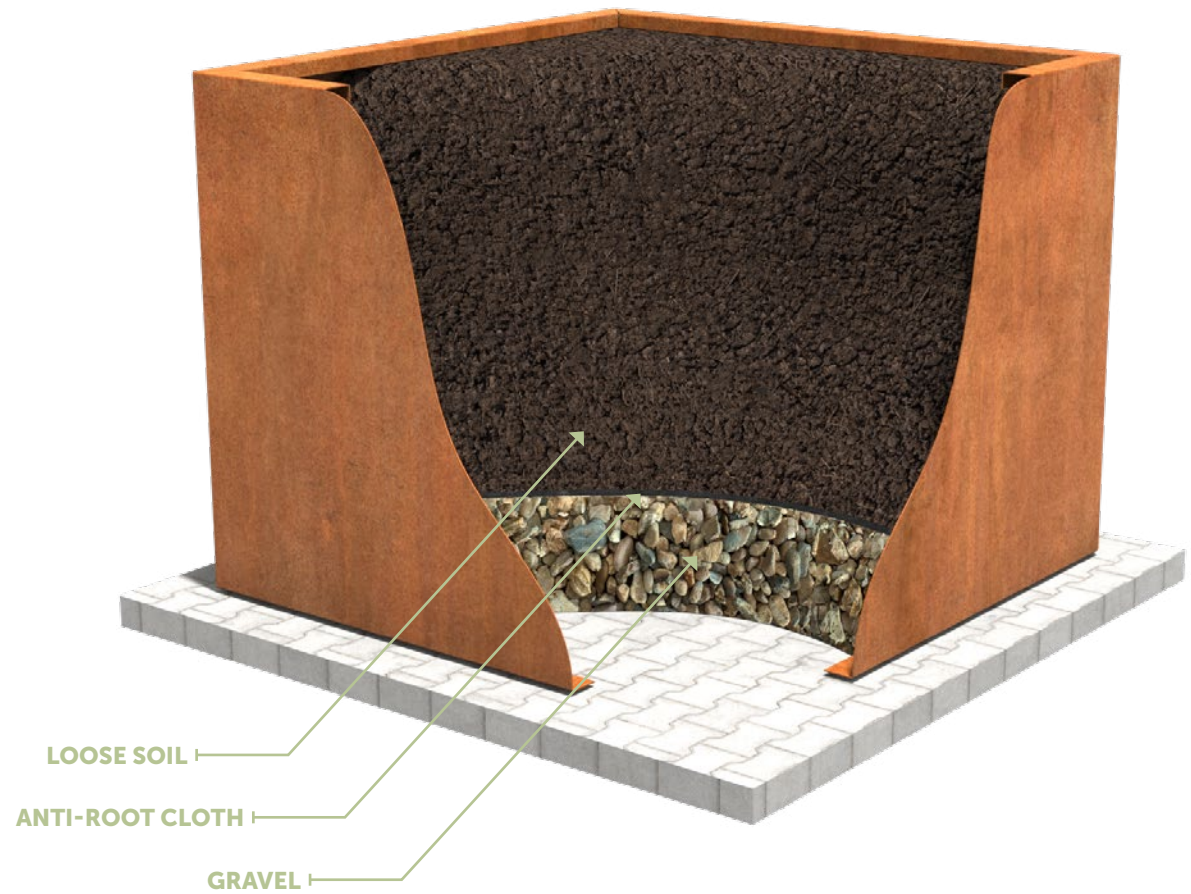


7. Place the corner plates in the corners, if supplied. Place them inside the planter, with the **raised edge towards the top edge** of the planter.
8. Use M8x20 bolts and tighten them by hand first. Place the bolts with the **bolt heads pointing upwards**, so that the bin ends up standing on the bolt heads.
9. After all bolts have been placed, they can all be tightened.
10. Place pull rods between the two long walls, if supplied. These will ensure that the planter will retain its shape and are therefore essential!
11. Loosen the M8x20 bolts at the bottom of the planter box and insert the lower tie rod (top in the illustration) into the U-profiles.
12. Place the second tension rod halfway into the planter box, using the M8x100 bolts for this.
13. When all panels and profiles are in place and the bolts are tight, turn the planter over. Follow the planting advice below to get the most out of your beautiful planter!



Planting advice

1. Fill the bottom of the planter with a layer of gravel (Ø35 mm grading, approx. 10 cm).
2. Place a permeable anti-root membrane over the gravel.
3. Cover the membrane with soil suitable for your chosen plants.



Accessories

All our accessories meet the highest standards and are an highly suitable addition to our products. Visit www.adezz.com for a complete overview of our accessories.



CORTEN VARNISH

CORTEN STEEL

Corten varnish can be applied to the corten steel products to stop the weathering process. Always read the descriptions on the packaging carefully before use.



RUST ACCELERATOR

CORTEN STEEL

Our corten steel products are delivered un-rusted and the weathering process will take approximately 4-5 months. This process can be accelerated with the BIO rust accelerator available on our website. Always read the descriptions on the packaging carefully before use.



CLEANER & PROTECTOR

GALVANISED COATED STEEL

We recommend cleaning our products at least twice a year. For optimal results, use the ADEZZ BIO Cleaner & Protector. Always read the descriptions on the packaging carefully before use.

ADEZZ

DESIGN TO GROW

Spending time outdoors has soared in popularity over the last few years, becoming an increasingly important part of our daily lives. Our brands ADEZZ, FORNO and FURNS offer a diverse range of products guaranteed to enhance the outdoor experience. Our collections create an ambience in which you can enjoy your garden to the fullest.

All brands have their own character, but they are designed to work together, allowing you to create endless combinations. The materials, finishes and styles are repeated across the collections so that they coordinate beautifully. The result? A long-lasting, stylish garden design: from sleek edging to exclusive furniture and from sturdy fireplaces to elegant water tables.

We design and manufacture all our products in-house, ensuring that we can continue to provide the high quality that you have come to expect from us. And we do this at the most competitive price possible. All our products are made in Europe with the utmost care, so we can be sure that they meet our exacting standards.

