

# PLACEMENT

## PLACEMENT

1. Provide a flat, solid (vibrated) surface. If not done carefully, it can create stresses in the product which could result in damage to the product.

2. Position the three legs of the DUNC picnic set, one third from each other in relation to the total circumference of the product.

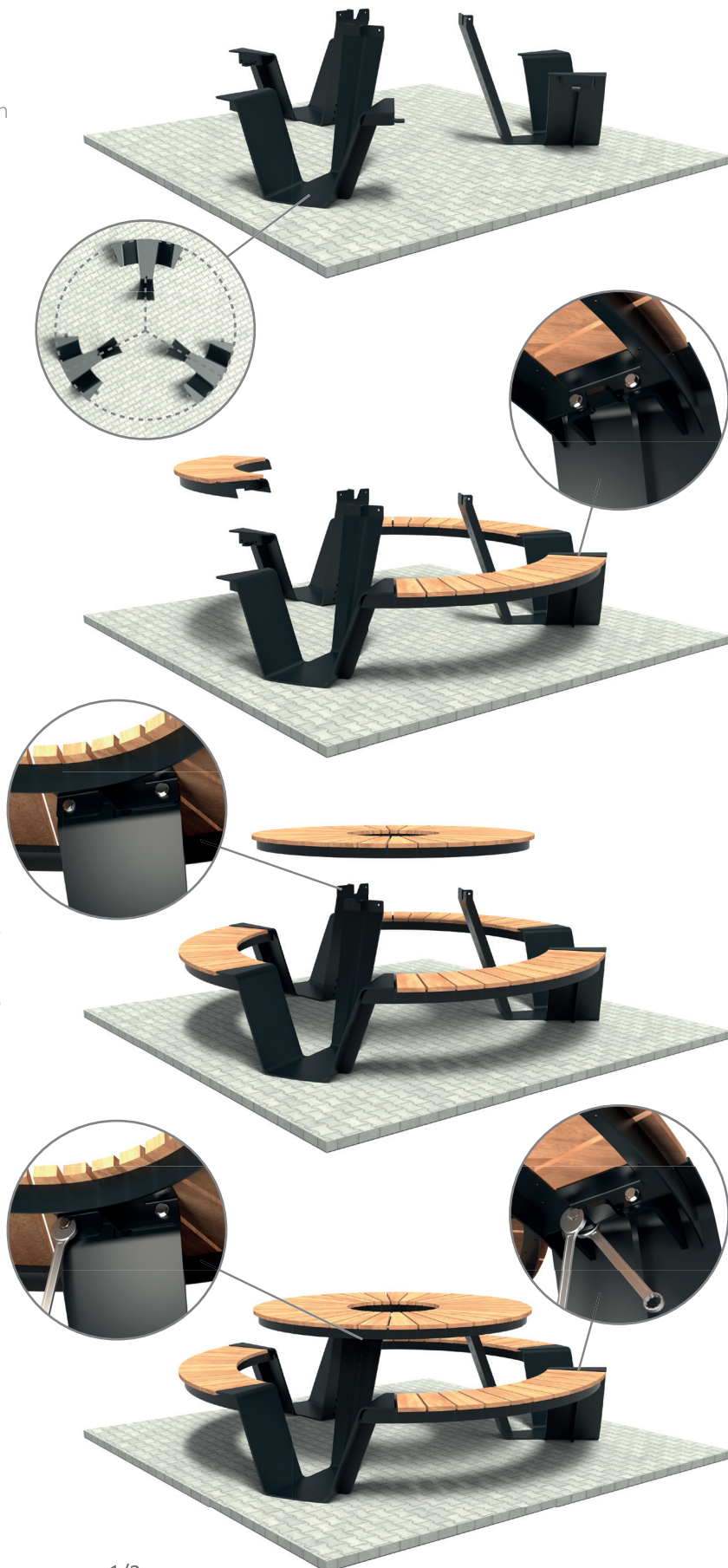
3. The seats are attached to the legs with nuts and bolts.

**Pay attention!** First tighten all the bolts loosely. After assembling the table top, all bolts can be tightened.

4. Place the table top on the three legs of the DUNC picnic set and first loosely tighten all the bolts.

**Pay attention!** Table top mounting points must be within the legs.

5. If all parts are correctly positioned, the bolts can be tightened.

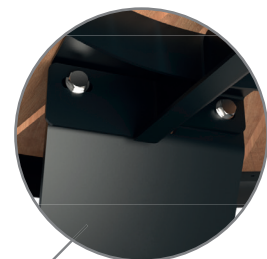
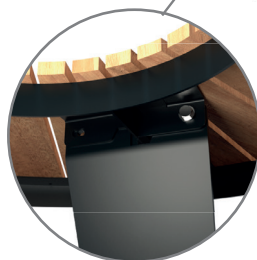
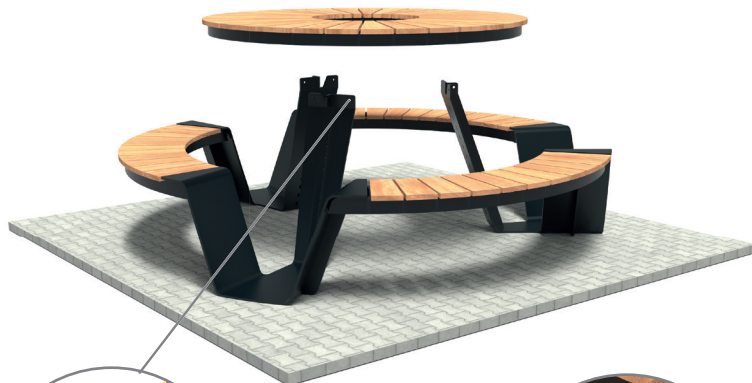


# PLACEMENT ACCESSORIES

## PLACEMENT ACCESSORIES

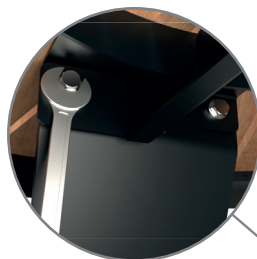
1. After the legs have been attached to the seats, the tabletop can be placed. Place the tabletop on the three legs of the DUNC picnic set. Only place one bolt on the right-hand side of the leg and then tighten all the bolts loosely.

**Pay attention!** Table top mounting points must be within the legs.



2. Next, the centre console or parasol console can be placed from below and attached to the picnic set. Align the mounting points of the console with the left holes in the legs. Use the long bolts (included with the console) to connect the legs, tabletop, and console.

**Pay attention!** First tighten all the bolts loosely.



3. If all parts are correctly positioned, the bolts can be tightened.

