



ADEZZ

DESIGN TO GROW

Walls

Walls

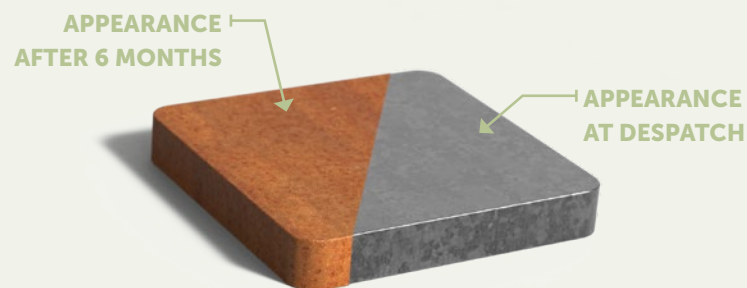
This wall's hollow construction allows easy installation of additions like lighting. It comes into its own as a partition, for example, to separate planted and paved areas.



**OPTION
CUSTOM MADE**



Material corten steel



With its bold, warm look, the corten steel wall adds a striking structural element to green spaces. The wall can also be used to create a private corner or provide shelter from the wind. The hollow construction makes it easy to install accessories. The wall should always be fixed securely to the ground.

The orange-brown patina on the metal contributes to the bold, warm look of this wall. The colour is the result of a natural layer of rust. Another name for corten steel is weathering steel: weather conditions have a positive effect on this wall.

Corten steel is a metal alloy made by adding copper, phosphorus, silicon, nickel and chromium to iron. When exposed to air, the material forms a protective layer of rust. This natural coating prevents further corrosion and makes the wall long-lasting.

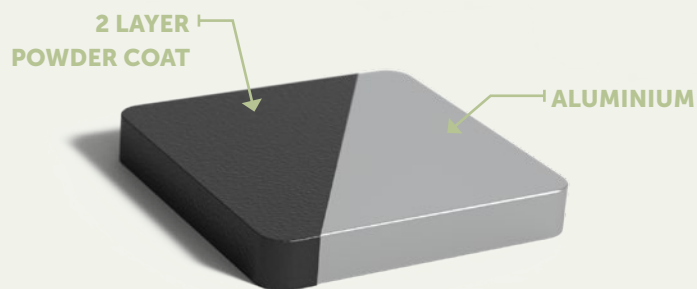
SPECIFICATIONS

- 5-year guarantee.
- Includes mounting option in the base.
- Corten steel walls are very robust, hard-wearing, weatherproof, low-maintenance and durable.
- The corten steel has a standard thickness of 2 mm.
- The product can be customised.
- Products are delivered without rust. The corten steel rusting process takes about 4-5 months, depending on weather conditions.
- The rust can be fixed by applying Owatrol. This is a penetrating rust inhibitor that forms a protective anti-rust coating. Owatrol protects the wall and stops the rust on corten steel flaking off.

KEY POINTS TO NOTE

- Products should be unpacked immediately upon receipt to release any moisture trapped inside the packaging. If the product is left in its packaging, it may develop uneven rust patches.
- Make sure the wall is always securely fixed into place, either to or in the ground. Our walls have a strip of approximately 5 cm along each side to allow mounting onto a firm surface.
- Corten steel should not be used in conditions that are continuously wet or damp.
- We do not recommend using corten steel within 2 km of a coastline.
- The weathering process may cause rust run-off.
- Clean annually by hosing dirt from the product with clean tap water.
- The guarantee expires if you drill or grind in a way that is not specified.

Material aluminium



With its timeless look, the aluminium wall adds a striking structural element to green spaces. The wall can also be used to create a private corner or provide shelter from the wind. The hollow construction makes it easy to install accessories. The wall should always be fixed securely to the ground.

Aluminium is resistant to corrosion and is available in several colours. It can be left outside all year round without damage, even in freezing temperatures, so you can enjoy this product for many years.

Once constructed, the aluminium wall is given several finishing treatments. The metal is roughened to allow better adhesion of the powder coating. This powder coating is available in a variety of colours and is applied with a strong adhesive primer. Finally, the wall is finished with a hard topcoat. This ensures that the wall is scratch resistant.

SPECIFICATIONS

- 5-year guarantee.
- Includes mounting option in the base.
- Aluminium walls are very robust, hard-wearing, resistant to corrosion and durable.
- The aluminium has a thickness of 3 mm.
- Scratch-resistant topcoat.
- We also supply professional maintenance products.

KEY POINTS TO NOTE

- Products should be unpacked immediately upon receipt to release any moisture trapped inside the packaging. This moisture can cause stains that are difficult to remove.
- Make sure the wall is always securely fixed into place, either to or in the ground. Our walls have a strip of approximately 5 cm along each side to allow mounting onto a firm surface.
- Clean annually with ADEZZ cleaner/protector cleaner. Do not use a pressure washer and/or scouring pad. This damages the coating.
- The guarantee expires if you drill or grind in a way that is not specified.

RAL COLOURS

Standard RAL colours are RAL 7016, RAL 7021, RAL 9005 and RAL 9016.

For all other available RAL colours, please check our website. There is a start-up charge for these colours.

Note! Colours may vary from the image.



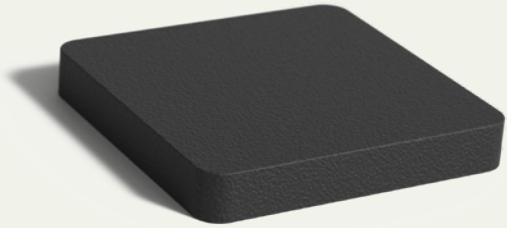
RAL 7016

RAL 7021

RAL 9005

RAL 9016

Material fibreglass



With its tranquil look, the polyester wall adds a striking structural element to green spaces. The wall can also be used to create a private corner or provide shelter from the wind. The hollow construction makes it easy to install accessories. The wall should always be fixed securely to the ground.

Our polyester wall is made of high-quality reinforced polyester. This makes the wall sturdy. The polyester is dyed through, and the wall will retain its colour.

SPECIFICATIONS

- 5-year guarantee.
- Includes mounting option in the base.
- Polyester walls are frost-resistant and strengthened to prevent warping.
- Very robust, fibre-reinforced material
- Lightweight and very strong.
- The polyester has a thickness of 3 mm.
- Available in RAL 7021, RAL 7035 and RAL 9016 as standard.
- We also supply professional maintenance products.

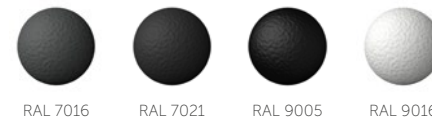
KEY POINTS TO NOTE

- Products should be unpacked immediately upon receipt to release any moisture trapped inside the packaging. This moisture can cause stains that are difficult to remove.
- Make sure the wall is always securely fixed into place, either to or in the ground. Our walls have a strip of approximately 5 cm along each side to allow mounting onto a firm surface.
- Clean at least twice a year with ADEZZ cleaner/protector. Do not use a pressure washer and/or scouring pad. This damages the coating.

RAL COLOURS

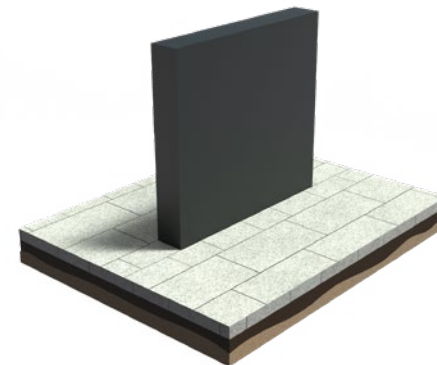
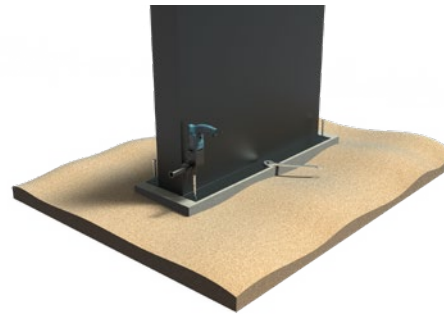
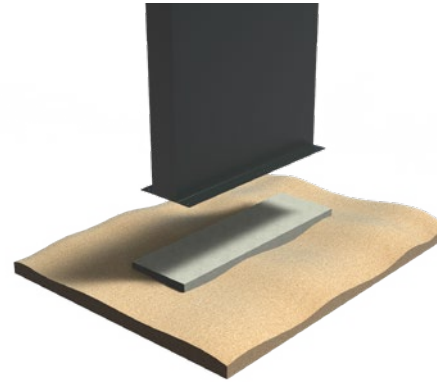
Standard RAL colours are RAL 7016, RAL 7021, RAL 9005 and RAL 9016. For all other available RAL colours, please check our website. There is a start-up charge for these colours.

Note! Colours may vary from the image.



Installation

1. Provide a level, solid surface. If not done carefully, this can cause tensions which can result in damage to the product.
2. Place the wall on the flat foundation, make sure it is firm and level.
3. Drill holes in the foundation corresponding to the holes in the wall.
4. Then fix the wall to the foundation using bolts and plugs, if necessary use a chemical anchor.
Note! First loosely tighten all the bolts, after which they can be tightened fully one by one.
5. Then cover the foundation with a layer of soil of at least 10 cm for extra stability and then finish potential paving.



Models

For a complete overview of all our products and specifications, please visit www.adezz.com.



**WALL
CORTEN STEEL**



**WALL
ALUMINIUM**



**WALL
FIBREGLASS**

Accessories

All our accessories meet the highest standards and are a highly suitable addition to our products. Visit www.adezz.com for a complete overview of our accessories.



RUST ACCELERATOR

CORTEN STEEL

Our corten steel products are delivered un-rusted and the weathering process will take approximately 4-5 months. This process can be accelerated with the BIO rust accelerator available on our website. Always read the descriptions on the packaging carefully before use.



CORTEN VARNISH

CORTEN STEEL

Corten varnish can be applied to the corten steel products to stop the weathering process. Always read the descriptions on the packaging carefully before use.



CLEANER & PROTECTOR

ALUMINIUM - FIBREGLASS

We recommend cleaning our products at least twice a year. For optimal results, use the ADEZZ BIO Cleaner & Protector. Always read the descriptions on the packaging carefully before use.



ADEZZ

DESIGN TO GROW

Spending time outdoors has soared in popularity over the last few years, becoming an increasingly important part of our daily lives. Our brands ADEZZ, FORNO and FURNS offer a diverse range of products guaranteed to enhance the outdoor experience. Our collections create an ambience in which you can enjoy your garden to the fullest.

All brands have their own character, but they are designed to work together, allowing you to create endless combinations. The materials, finishes and styles are repeated across the collections so that they coordinate beautifully. The result? A long-lasting, stylish garden design: from sleek edging to exclusive furniture and from sturdy fireplaces to elegant water tables.

We design and manufacture all our products in-house, ensuring that we can continue to provide the high quality that you have come to expect from us. And we do this at the most competitive price possible. All our products are made in Europe with the utmost care, so we can be sure that they meet our exacting standards.

