



ADEZZ

DESIGN TO GROW

ELLIPSE

ELLIPSE

The ELLIPSE has pleasing curves. The natural shape of this planter will add elegance to any garden.



**OPTION
CUSTOMISATION**



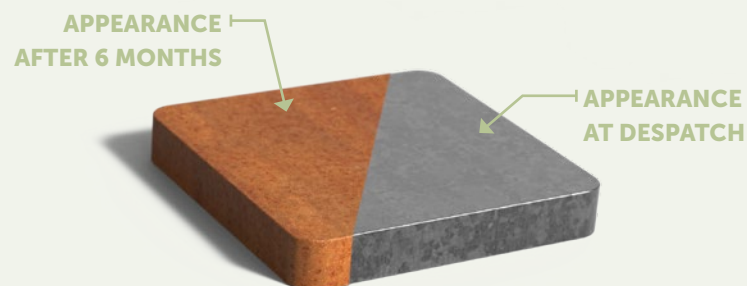
**OPTION
OPEN BOTTOM**



**OPTION
WATERPROOF**



Material corten steel



The ELLIPSE corten steel planter gives gardens an elegant and warm look, thanks to the orange-brown patina on the metal. This patina is formed by a natural layer of rust. Another name for corten steel is weathering steel: weather conditions have a positive effect on this planter.

Corten steel is a metal alloy made by adding copper, phosphorus, silicon, nickel and chromium to iron. When exposed to air, the material forms a protective layer of rust. This natural coating prevents further corrosion, extending the planter's life.

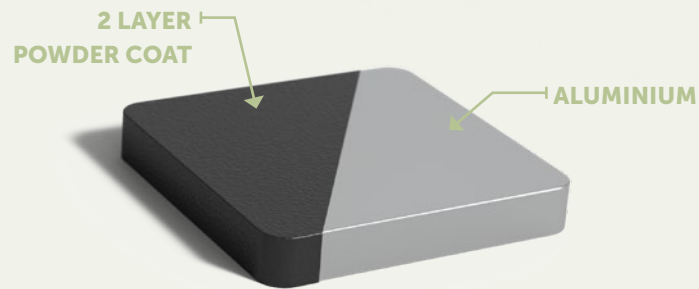
SPECIFICATIES

- 5-year guarantee.
- Corten steel planters are very robust, hard-wearing, weatherproof, low-maintenance and durable.
- Without bottom: very suitable for planting large plants or trees. These can root on in the garden thanks to the bottomless planter.
- With bottom: The planter has hidden feet and drainage holes, which allows it to float a little above the ground (15 mm) and provides optimal drainage.
- The corten steel has a standard thickness of 3 mm.
- The planter can be customised.
- Products are delivered without rust. The corten steel rusting process takes about 4-5 months, depending on weather conditions.
- The rust can be fixed by applying Owatrol. This is a penetrating rust inhibitor that forms a protective anti-rust coating. Owatrol protects the planter and stops the rust on corten steel flaking off.

KEY POINTS TO NOTE

- Products should be unpacked immediately upon receipt to release any moisture trapped inside the packaging. If the product is left in its packaging, it may develop uneven rust patches.
- Ensure proper drainage.
- Do not use an overflow pipe; no excess water should remain in the corten steel planter. This can cause the metal to corrode due to the interaction of oxygen and soil.
- Do not use hydro pellets: they retain moisture.
- We do not recommend using corten steel within 2 km of a coastline.
- The weathering process may cause rust run-off.
- The guarantee expires if you drill or grind in a way that is not specified.

Material aluminium



The ELLIPSE aluminium planter gives gardens an elegant look. The planter is corrosion resistant. By default, it is not waterproof. Aluminium is very lightweight. The aluminium planter can be left outside all year round without damage, even in freezing temperatures. That means that you can enjoy this planter for many years.

Once constructed, the aluminium planter is given several finishing treatments. The metal is roughened to allow better adhesion of the powder coating. This powder coating is available in a variety of colours and is applied with a strong adhesive primer. Finally, the planter is finished with a hard topcoat. This ensures that the ELLIPSE aluminium planter is scratch resistant.

SPECIFICATIONS

- 5-year guarantee.
- Aluminium planters are very robust, hard-wearing, resistant to corrosion and durable.
- The aluminium has a thickness of 3 mm.
- Without bottom: very suitable for planting large plants or trees. These can root on in the garden thanks to the bottomless planter.
- With bottom: The planter has hidden feet and drainage holes, which allows it to float a little above the ground (15 mm) and provides optimal drainage.
- Scratch-resistant topcoat.
- The planter can be customised and is available in all standard RAL colours.
- We also supply professional maintenance products.

KEY POINTS TO NOTE

- Products should be unpacked immediately upon receipt to release any moisture trapped inside the packaging. This moisture can cause stains that are difficult to remove.
- Keep the drainage holes clear to allow excess water to run off.
- We strongly recommend against drilling in or grinding the metal. This allows moisture to permeate the coating, causing it to come off.
- Clean annually by hosing dirt from the planter with clean tap water, followed by cleaning with detergent. Do not use a pressure washer and/or scouring pad for this purpose. This damages the coating.
- The guarantee expires if you drill or grind in a way that is not specified.

RAL COLOURS

Standard RAL colours are RAL 7016, RAL 7021, RAL 9005 and RAL 9016.

For all other available RAL colours, please check our website. There is a start-up charge for these colours.

Note! Colours may vary from the image.



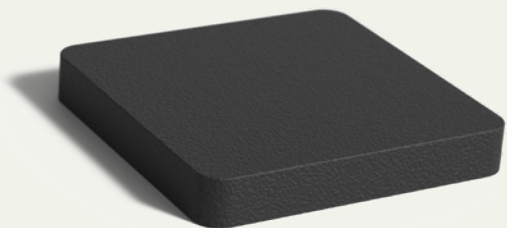
RAL 7016

RAL 7021

RAL 9005

RAL 9016

Material fibreglass



The ELLIPSE fibreglass planter gives gardens an elegant look. The fibreglass planter is intended for outdoor use. By default, it is not waterproof. Optionally, the ELLIPSE planter can be supplied in a waterproof version. The planter is supplied in two standard colours. Other colours can be ordered for an additional charge, so there is a matching ELLIPSE fibreglass planter to match every design scheme.

Our fibreglass planter is made of high-quality reinforced fibreglass. This makes the planter sturdy. The reinforcement has been extended into the corners, which prevents splitting. The fibreglass is dyed through, and the planter will retain its colour.

SPECIFICATIONS

- 5-year guarantee.
- Fibreglass planters are frost-resistant and strengthened to prevent warping.
- Lightweight and very strong.
- Finished with a double-turned edge.
- The fibreglass has a thickness of 3 mm.
- Includes circles in the base for drilling drainage holes. A channel in the base ensures that the planter floats a little above the ground (15 mm) and has optimal drainage after drainage holes have been drilled.
- Available to order in 7 different RAL colours.
- We also supply professional maintenance products.

KEY POINTS TO NOTE

- Products should be unpacked immediately upon receipt to release any moisture trapped inside the packaging. This moisture can cause stains that are difficult to remove.
- Always drill drainage holes in the base of the planter. The base has circles for drilling. These circles are connected by a drainage channel. After drilling the drainage holes, install the overflow pipe. This will ensure that no excess water remains in the planter.
- Fibreglass planters should always be installed on a flat surface. Do not place the planter on beams, stones, etc.
- The planter is not suitable for moving once filled.
- Clean at least twice a year with our ADEZZ cleaner/protector. Do not use a pressure washer and/or scouring pad. This damages the coating.
- The guarantee expires if you drill or grind in a way that is not specified.

RAL COLOURS

Standard RAL colours are RAL 7016, RAL 7021, RAL 9005 and RAL 9016.

For all other available RAL colours, please check our website. There is a start-up charge for these colours.

Note! Colours may vary from the image.



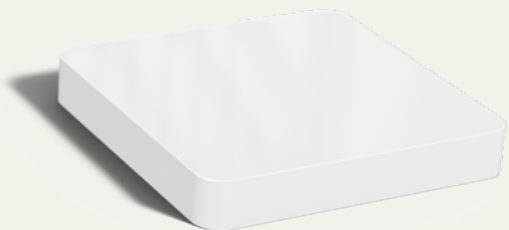
RAL 7016

RAL 7021

RAL 9005

RAL 9016

Material fibreglass glossy



The ELLIPSE fibreglass planter gives gardens an elegant look. The fibreglass planter is intended for outdoor use. By default, it is not waterproof. Optionally, the ELLIPSE planter can be supplied in a waterproof version.

Our fibreglass planter is made of high-quality reinforced fibreglass. This makes the planter sturdy. The reinforcement has been extended into the corners, which prevents splitting. The fibreglass is dyed through, and the planter will retain its colour. The 'glossy' finish gives the planter a smooth and stylish appeal.

SPECIFICATIONS

- 5-year guarantee.
- Fibreglass planters are frost-resistant and strengthened to prevent warping.
- Lightweight and very strong.
- The smooth finish makes this planter easy to maintain.
- Finished with a double-turned edge.
- The fibreglass has a thickness of 3 mm.
- Includes circles in the base for drilling drainage holes. A channel in the base ensures that the planter floats a little above the ground (15 mm) and has optimal drainage after drainage holes have been drilled.
- Available to order in 7 different RAL colours.
- We also supply professional maintenance products.

KEY POINTS TO NOTE

- Products should be unpacked immediately upon receipt to release any moisture trapped inside the packaging. This moisture can cause stains that are difficult to remove.
- Always drill drainage holes in the base of the planter. The base has circles for drilling. These circles are connected by a drainage channel. After drilling the drainage holes, install the overflow pipe. This will ensure that no excess water remains in the planter.
- Fibreglass planters should always be installed on a flat surface. Do not place the planter on beams, stones, etc.
- The planter is not suitable for moving once filled.
- Clean at least twice a year with our ADEZZ cleaner/protector. Do not use a pressure washer and/or scouring pad. This damages the coating.
- The guarantee expires if you drill or grind in a way that is not specified.

RAL COLOURS

Standard RAL colours are RAL 7016, RAL 7021, RAL 9005 and RAL 9016.

For all other available RAL colours, please check our website. There is a start-up charge for these colours.

Note! Colours may vary from the image.



RAL 7016



RAL 7021



RAL 9005



RAL 9016

Installation

CORTEN STEEL

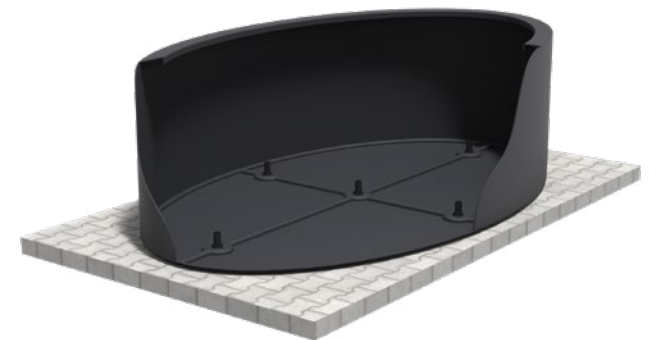
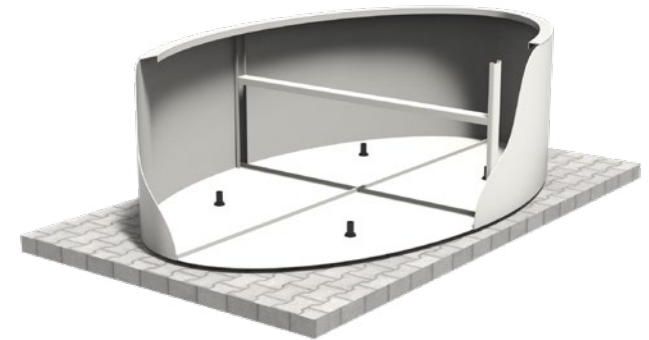
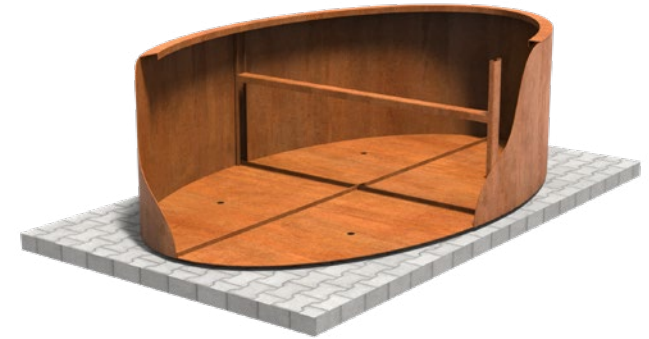
1. Ensure a flat, solid (compacted) surface. If not done carefully, stress can build up in the product, potentially causing damage. **Note!** Never use an overflow pipe in a corten steel planter.
2. Tie rods in planters are essential for the structure and shape stability of the planter. A tie rod must never be removed.
3. Always allow sufficient breathing space (at least 1 cm) around the planters to prevent moisture retention.

ALUMINIUM

1. Ensure a flat, solid (compacted) surface. If not done carefully, stress can build up in the product, potentially causing damage.
2. Optionally, place overflow pipes at the bottom of the planter to create a water buffer. The number of overflow pipes to use depends on the number of drainage holes. Refer to the drawings on our website for details.
3. Tie rods in planters are essential for the structure and shape stability of the planter. A tie rod must never be removed.
4. Always allow sufficient breathing space (at least 1 cm) around the planters to prevent moisture retention.

FIBREGLASS (GLOSSY)

1. Ensure a flat, solid (compacted) surface. If not done carefully, stress can build up in the product, potentially causing damage. **Note!** Always drill drainage holes at the bottom of the planters. Use the raised sections in the bottom, if present, for this purpose.
2. Optionally, place overflow pipes at the bottom of the planter to create a water buffer. The number of overflow pipes to use depends on the number of drainage holes. Refer to the drawings on our website for details.
3. Reinforcing ribs in planters are essential for the structure and shape stability of the planter. These must never be removed.
4. Always allow sufficient breathing space (at least 1 cm) around the planters to prevent moisture retention.



Planting advice

CORTEN STEEL STANDARD

1. Cover the bottom with a layer of pebbles Ø35 mm (approx. 10 cm).
2. Lay a water-permeable anti-root cloth over the pebbles.
3. Cover the anti-root cloth with soil suitable for your type of planting.
4. Do not use an overflow pipe; no water should remain in the corten steel planter.

ALUMINUM AND FIBREGLASS (GLOSSY) STANDARD

1. Insert the overflow pipes into the prepared drainage holes.
2. Fill the planter with approx. 10 cm of drainage material.
3. Place a water-permeable anti-root cloth over the drainage material.
4. Add soil suitable for your type of planting.
5. Keep the drainage clear to allow excess water to escape.

CORTEN STEEL WITHOUT BOTTOM

1. Fill the planter with a layer of pebbles Ø35 mm (approx. 10 cm).
2. Lay a water-permeable anti-root cloth over the pebbles.
3. Cover the anti-root cloth with soil suitable for your type of planting.

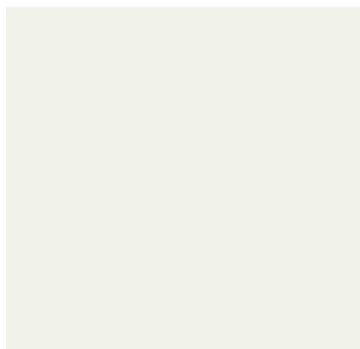
ALUMINUM WITHOUT BOTTOM

1. Fill the planter with approx. 10 cm of drainage material.
2. Place a water-permeable anti-root cloth over the drainage material.
3. Add soil suitable for your type of planting.
4. Keep the drainage clear to allow excess water to escape.

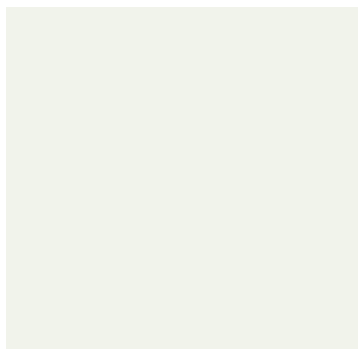


Models

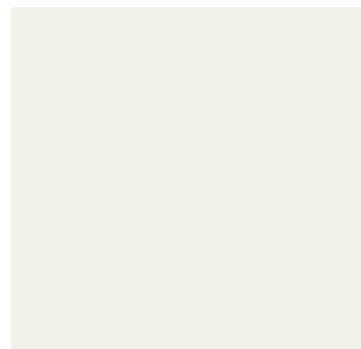
Click on the images for more information about the products.



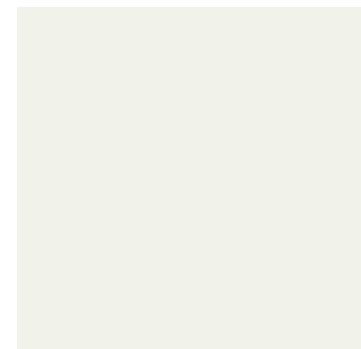
**ELLIPSE STANDARD
CORTEN STEEL**



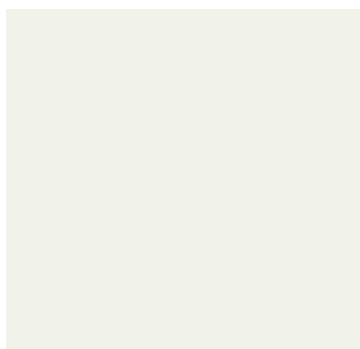
**ELLIPSE STANDARD
ALUMINIUM**



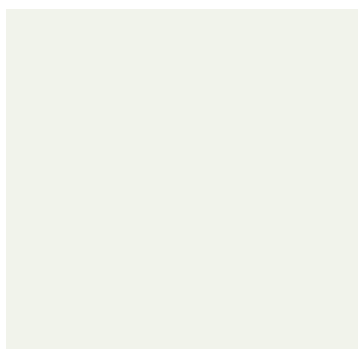
**ELLIPSE STANDARD
FIBREGLASS**



**ELLIPSE STANDARD
FIBREGLASS GLOSSY**



**ELLIPSE WITHOUT BOTTOM
CORTEN STEEL**



**ELLIPSE WITHOUT BOTTOM
ALUMINIUM**



Accessories

All our accessories meet the highest standards and are an highly suitable addition to our products. Click on the images for more information about the products.



RUST ACCELERATOR

CORTEN STEEL

Our corten steel products are delivered un-rusted and the weathering process will take approximately 4-5 months. This process can be accelerated with the BIO rust accelerator available on our website. Always read the descriptions on the packaging carefully before use.



CORTEN STEEL VARNISH

CORTEN STEEL

Corten varnish can be applied to the corten steel products to stop the weathering process. Always read the descriptions on the packaging carefully before use.



CLEANER & PROTECTOR

ALUMINIUM - FIBREGLASS

We recommend cleaning our products at least twice a year. For optimal results, use the ADEZZ BIO Cleaner & Protector. Always read the descriptions on the packaging carefully before use.



OVERFLOW PIPE

ALUMINIUM - FIBREGLASS

Overflow pipes provide a water buffer at the bottom of the planter and fit into the standard drainage holes, making them easy to install.

ADEZZ

DESIGN TO GROW

Spending time outdoors has soared in popularity over the last few years, becoming an increasingly important part of our daily lives. Our brands ADEZZ, FORNO and FURNS offer a diverse range of products guaranteed to enhance the outdoor experience. Our collections create an ambience in which you can enjoy your garden to the fullest.

All brands have their own character, but they are designed to work together, allowing you to create endless combinations. The materials, finishes and styles are repeated across the collections so that they coordinate beautifully. The result? A long-lasting, stylish garden design: from sleek edging to exclusive furniture and from sturdy fireplaces to elegant water tables.

We design and manufacture all our products in-house, ensuring that we can continue to provide the high quality that you have come to expect from us. And we do this at the most competitive price possible. All our products are made in Europe with the utmost care, so we can be sure that they meet our exacting standards.

ADEZZ© product information edition 1, 06 - 2024. This product information has been compiled with great care. It is nevertheless possible that it contains errors or is not up to date. We reserve the right to amend or change prices and images.

