

WATER FEATURES



Product description

Our water features are sure to create an oasis in your garden. The variety of designs and shapes is enormous. Round, square and rectangular shapes are all possible. Many of the models can be ordered with a waterfall or fountain and these can also include LED lighting. Each pond has 2 connections as standard, with 1 inch inner tread. In addition, each pond has an overflow pipe which can be easily removed. On our website you can download the installation manual and technical drawings. Ponds and pond walls are made to order therefore never in stock. Delivery time for standard sizes is 8 weeks, delivery time for bespoke sizes on request.

SPECIFICATIONS

General information

Our water features consist out of:

- Thickness: Corten Steel 3 mm
- Thickness: Aluminium 4 mm
- Ponds: inner Polyurea coating
- Including Stainless Steel fasteners
- 5 year warranty (descending)

Corten

- Brown-orange rust colour
- Delivered un-rusted
- Rust process takes 4-5 months
- BIO rust accelerator available

Options

- Waterfalls and fountains incl LED
- Pond pumps

Aluminum

Stock colours RAL 7021, RAL 9016.

Andere standaard RAL kleuren zijn mogelijk (hiervoor worden opstartkosten gerekend).

IMPORTANT

Points of attention

- Clean ponds, before filling with water, on the inside to prevent rusting of blasting grit.
- The pH of the water must be neutral (7).
- Ponds and pond walls are not part of our standard stock. Delivery time for standard dimensions is 8 weeks, delivery time for customised products are on request.
- The products must be unpacked immediately after delivery.
- We only use Corten steel type S355JOWP.
- Coastal areas: We do not recommend using Corten steel within a radius of 2 km from a coastline.
- During the weathering process rust residue can come off the product.
- Drilling / grinding in the material is not permitted.

Maintenance

- Annual cleaning by removing coarse dirt by with clean tap water.
- Aluminium features must be maintained (cleaning and removing limescale)
Note! Do not use a high-pressure cleaner or abrasive sponge.
- Adezz maintenance products are available (page 5).

PLACEMENT

INSTALLATION

1. Provide a level, solid surface. If not done carefully, this can cause tensions which can result in damage to the product.

2. Place the pond in the desired position, and if required the fixed pond wall.

3. Remove the nuts and washers from the pond wall and then place the wall on the pond. The bolts of the pond wall go through the holes in the pond. Then screw the nuts and washers back on the bolts to connect the wall to the pond.

Note! First loosely tighten all the bolts, after which they can be tightened fully one by one.

4. In addition to fixed pond walls, you can also opt for a free-standing wall. Place a free-standing pond wall on a flat, stable foundation below ground level or on a flat, stable pavement.

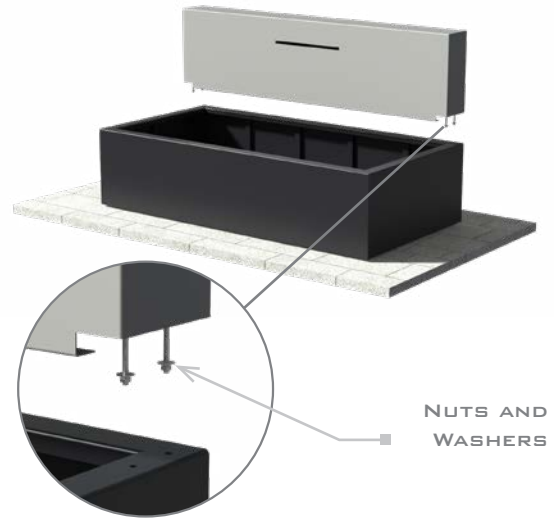
5. Drill holes in the foundation / pavement at the locations that correspond to the holes at the bottom of the pond wall. Then attach the wall to the foundation / pavement with bolts and plugs.

Note! First loosely tighten all the bolts, after which they can be tightened fully one by one.

6. The water blade can easily be placed in the wall via a hatch in the back of the pond wall.

7. Connect the water hose to the water blade before replacing the hatch.

8. After all components have been placed, the pump can be connected and the pond can be filled with water.



USAGE IN WINTER

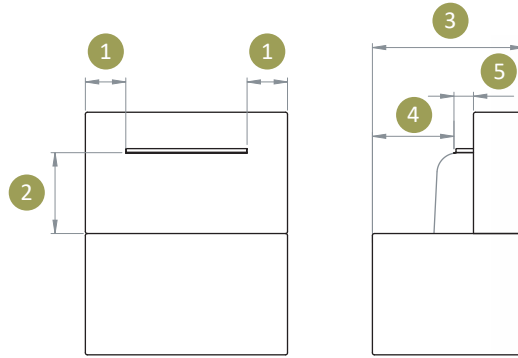
- Always remove the plug from the power socket in case of frost
- Lower the water level to at least 10cm below the edge
- A pond de-icer is recommended (for sale at any garden centre or DIY store)
- Pump can remain in the water if the above mentioned conditions are met
- You can also remove the pump from the pond and allow it to overwinter under water in a frost-free place

PLACEMENT

DESIGN RULES WATERFALL

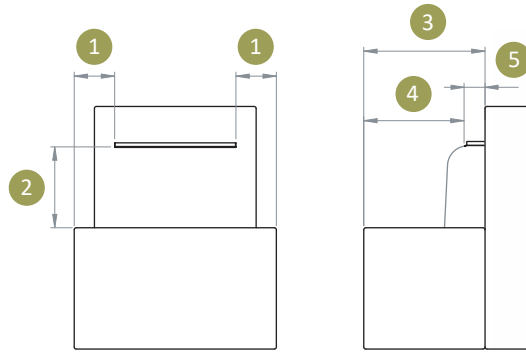
When installing a fixed pond wall with a waterfall, always take the following dimensions into account. If these dimensions are not met, a properly functioning waterfall cannot be guaranteed.

1. Minimal 200 mm
2. Maximum 400 mm
3. Minimal 800 mm
4. Minimal 450 mm
5. Size waterfall 100 mm (fixed dimension)



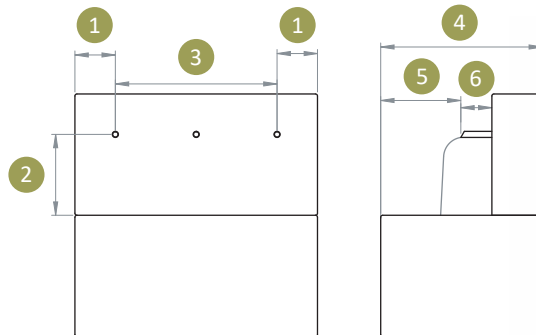
When installing a free standing pond wall with a waterfall, always take the following dimensions into account. If these dimensions are not met, a properly functioning waterfall cannot be guaranteed.

1. Minimal 200 mm
2. Maximum 400 mm
3. Minimal 550 mm
4. Minimal 450 mm
5. Size waterfall 100 mm (fixed dimension)



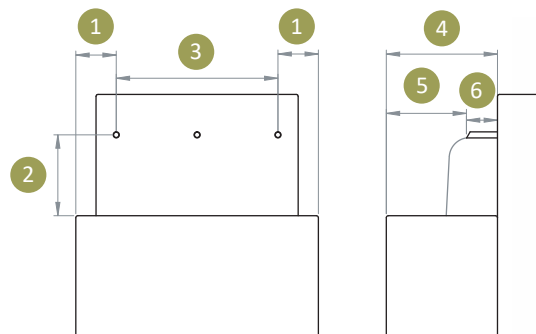
When installing a fixed pond wall with a tube waterfall, always take the following dimensions into account. If these dimensions are not met, a properly functioning waterfall cannot be guaranteed.

1. Minimal 200 mm
2. Maximum 400 mm
3. Width waterfall 800 mm (fixed dimension)
4. Minimal 750 mm
5. Minimal 350 mm
6. Size waterfall 150 mm (fixed dimension)



When installing a free standing pond wall with a tube waterfall, always take the following dimensions into account. If these dimensions are not met, a properly functioning waterfall cannot be guaranteed.

1. Minimal 200 mm
2. Maximum 400 mm
3. Width waterfall 800 mm (fixed dimension)
4. Minimal 500 mm
5. Minimal 350 mm
6. Size waterfall 150 mm (fixed dimension)



WATER FEATURES

MODELS

For a complete overview of all our products and specifications, please visit www.adezz.com



POND CORTEN



WALL PLACED ON POND CORTEN



WALL FREESTANDING CORTEN



WATER TABLE CORTEN



WATER TABLE SQUARE CORTEN



WATER TABLE ROUND CORTEN



WATERTABLE WITH BOWLS CORTEN



WATER BLOCK CORTEN



WATER BOWL CORTEN

OPTIONS



CUSTOM MADE

WATER FEATURES

MODELLEN

For a complete overview of all our products and specifications, please visit www.adezz.com



POND ALUMINUM



WALL PLACED ON POND ALUMINUM



WALL FREESTANDING ALUMINUM



WATER TABLE ALUMINUM



WATER TABLE SQUARE ALUMINUM



WATER TABLE ROUND ALUMINUM



WATERTABLE WITH BOWLS ALUMINUM

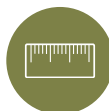


WATER BLOCK ALUMINUM



WATER BOWL COATED STEEL

OPTIONS



CUSTOM MADE

ACCESSORIES

ACCESSORIES

All our accessories meet the highest standards and are an highly suitable addition to our products. Visit www.adezz.com for a complete overview of our accessories.



CLEANER & PROTECTOR

We recommend cleaning our products at least twice a year. For optimal results, use the ADEZZ BIO Cleaner & Protector. Always read the descriptions on the packaging carefully before use.



RUST ACCELERATOR

Our Corten Steel products are delivered un-rusted and the weathering process will take approximately 4-5 months. This process can be accelerated with the BIO rust accelerator available on our website. Always read the descriptions on the packaging carefully before use.



DESCALER

We recommend the use of ADEZZ BIO Descaler + to remove limescale from your products. Always read the directions on the packaging carefully before use.



CORTEN VARNISH

Corten varnish can be applied to the Corten Steel products to stop the weathering process. Always read the descriptions on the packaging carefully before use.