

PONDS AND POND WALLS



Product description

Our ponds and pond walls are sure to create an oasis in your garden. Products are available in corten steel or powder-coated aluminum. Our pond walls are equipped with a waterfall and pump as standard.

Each pond is equipped with a fixed overflow pipe and can optionally be provided with inlet holes (position can be chosen when selecting the desired product). On our website you can download the installation manual and technical drawings.

Ponds and pond walls are made to order therefore never in stock. Delivery time on request.

SPECIFICATIONS

General information

Our water features consist out of:

- Thickness: Corten Steel 2 mm
- Thickness: Aluminium 3 mm
- Ponds: inner Polyurea coating
- Including Stainless Steel fasteners
- 5 year warranty (descending)

Corten

- Brown-orange rust colour
- Delivered un-rusted
- Rust process takes 4-5 months
- BIO rust accelerator available

Options

- Waterfall

Aluminum

Stock colours RAL 7021, RAL 9016.

Almost any RAL colour is available (start-up costs apply).

IMPORTANT

Points of attention

- Clean ponds, before filling with water, on the inside to prevent rusting of blasting grit.
- The pH of the water must be neutral (7).
- Ponds and pond walls are not part of our standard stock. Delivery time on request.
- The products must be unpacked immediately after delivery.
- We only use Corten steel type S355JOWP.
- Coastal areas: We do not recommend using Corten steel within a radius of 2 km from a coastline.
- During the weathering process rust residue can come off the product.
- Drilling / grinding in the material is not permitted.

Maintenance

- Annual cleaning by removing coarse dirt by with clean tap water.
- Aluminium features must be maintained (cleaning and removing limescale)
- **Note!** Do not use a high-pressure cleaner or abrasive sponge.
- Adezz maintenance products are available (page 5).

PLACEMENT

INSTALLATION

1. Provide a level, solid surface. If not done carefully, this can cause tensions which can result in damage to the product.

2. Place the pond in the desired position, and if required the fixed pond wall.

3. On the inside hook the clamp over the side of the pond wall. Then tighten the bolts until they clamp against the underside of the pond edge.

Note! First loosely tighten all the bolts, after which they can be tightened fully one by one.

4. In addition to fixed pond walls, you can also opt for a free-standing wall. Place a free-standing pond wall on a flat, stable foundation below ground level or on a flat, stable pavement.

5. Drill holes in the foundation / pavement at the locations that correspond to the holes at the bottom of the pond wall. Then attach the wall to the foundation / pavement with bolts and plugs.

Note! First loosely tighten all the bolts, after which they can be tightened fully one by one.

6. The water blade can easily be placed in the wall via a hatch in the back of the pond wall.

7. Connect the water hose to the water blade before replacing the hatch.

8. After all components have been placed, the pump can be connected and the pond can be filled with water.



USAGE IN WINTER

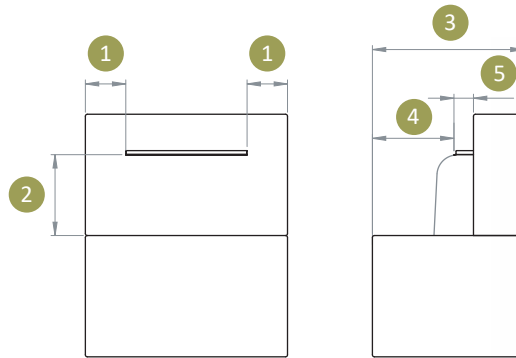
- Always remove the plug from the power socket in case of frost
- Lower the water level to at least 10cm below the edge
- A pond de-icer is recommended (for sale at any garden centre or DIY store)
- Pump can remain in the water if the above mentioned conditions are met
- You can also remove the pump from the pond and allow it to overwinter under water in a frost-free place

PLACEMENT

DESIGN RULES WATERFALL

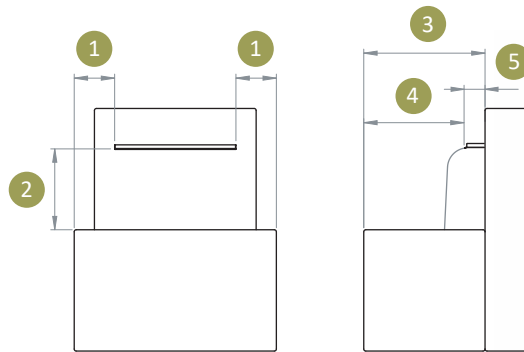
When installing a fixed pond wall with a waterfall, always take the following dimensions into account. If these dimensions are not met, a properly functioning waterfall cannot be guaranteed.

1. Minimal 200 mm
2. Maximum 400 mm
3. Minimal 800 mm
4. Minimal 400 mm
5. Size waterfall 150 mm (fixed dimension)



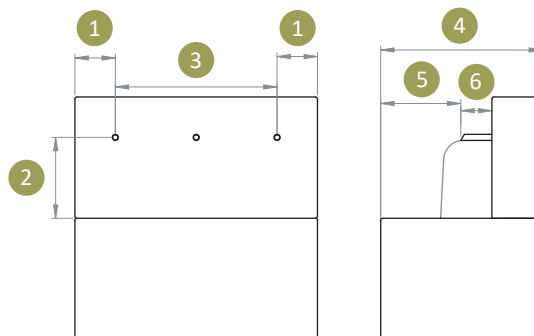
When installing a free standing pond wall with a waterfall, always take the following dimensions into account. If these dimensions are not met, a properly functioning waterfall cannot be guaranteed.

1. Minimal 200 mm
2. Maximum 400 mm
3. Minimal 550 mm
4. Minimal 400 mm
5. Size waterfall 150 mm (fixed dimension)



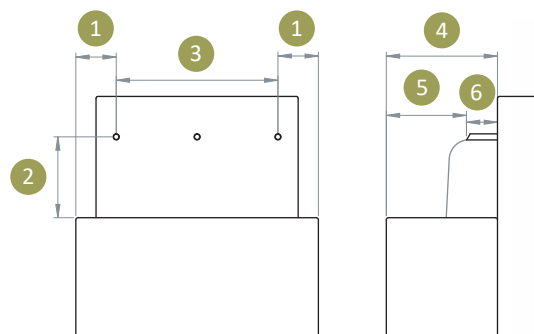
When installing a fixed pond wall with a tube waterfall, always take the following dimensions into account. If these dimensions are not met, a properly functioning waterfall cannot be guaranteed.

1. Minimal 200 mm
2. Maximum 400 mm
3. Width waterfall 800 mm (fixed dimension)
4. Minimal 750 mm
5. Minimal 350 mm
6. Size waterfall 150 mm (fixed dimension)



When installing a free standing pond wall with a tube waterfall, always take the following dimensions into account. If these dimensions are not met, a properly functioning waterfall cannot be guaranteed.

1. Minimal 200 mm
2. Maximum 400 mm
3. Width waterfall 800 mm (fixed dimension)
4. Minimal 500 mm
5. Minimal 350 mm
6. Size waterfall 150 mm (fixed dimension)



WATER FEATURES

MODELS

For a complete overview of all our products and specifications, please visit www.adezz.com



POND CORTEN



WALL PLACED ON POND CORTEN



WALL FREESTANDING CORTEN



POND ALUMINIUM



WALL PLACED ON POND ALUMINIUM



WALL FREESTANDING ALUMINIUM

OPTIONS



CUSTOM MADE

ACCESSORIES

ACCESSORIES

All our accessories meet the highest standards and are an highly suitable addition to our products. Visit www.adezz.com for a complete overview of our accessories.



CLEANER & PROTECTOR

We recommend cleaning our products at least twice a year. For optimal results, use the ADEZZ BIO Cleaner & Protector. Always read the descriptions on the packaging carefully before use.



RUST ACCELERATOR

Our Corten Steel products are delivered un-rusted and the weathering process will take approximately 4-5 months. This process can be accelerated with the BIO rust accelerator available on our website. Always read the descriptions on the packaging carefully before use.



DESCALER

We recommend the use of ADEZZ BIO Descaler + to remove limescale from your products. Always read the directions on the packaging carefully before use.



CORTEN VARNISH

Corten varnish can be applied to the Corten Steel products to stop the weathering process. Always read the descriptions on the packaging carefully before use.